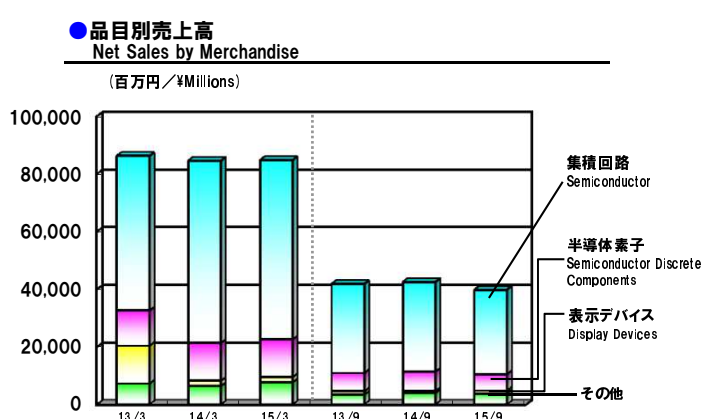
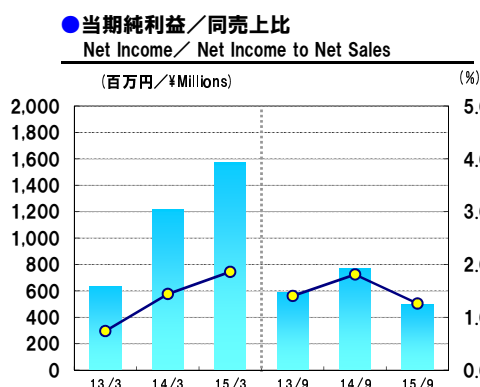
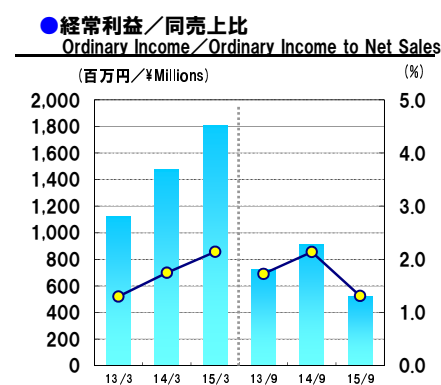
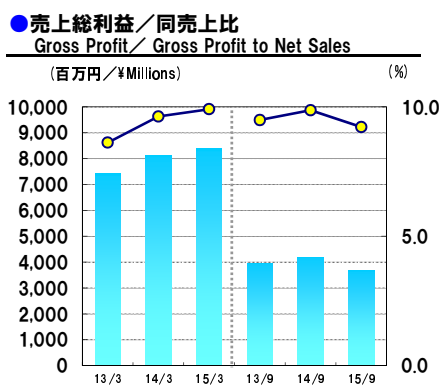
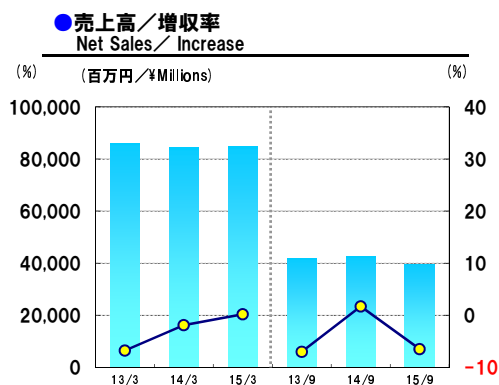


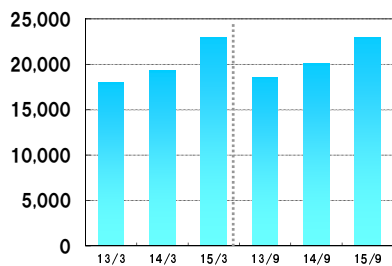
【連結：Consolidated】



		2013/3	2014/3	2015/3	2013/9	2014/9	2015/9
売上高 (百万円)	Net Sales(¥Millions)	86,165	84,518	84,697	41,774	42,486	39,739
品目別売上高 (百万円)	Net Sales by Merchandise (¥Millions)						
集積回路	Semiconductor Integrated Circuits	53,545	63,142	62,132	30,873	31,037	29,207
半導体素子	Semiconductor Discrete Components	12,265	13,102	13,034	6,302	6,723	5,715
表示デバイス	Display Devices	13,117	1,855	1,771	1,163	714	981
その他	Others	7,236	6,418	7,758	3,435	4,011	3,835
合計	Total	86,165	84,518	84,697	41,774	42,486	39,379
売上総利益 (百万円)	Gross Profit (¥Millions)	7,425	8,136	8,389	3,965	4,193	3,662
同売上比 (%)	Gross Profit to Net Sales (%)	8.62	9.63	9.91	9.49	9.87	9.22
営業利益 (百万円)	Operating Income (¥Millions)	1,235	1,475	1,707	726	901	495
同売上比 (%)	Operating Income to Net Sales (%)	1.43	1.75	2.02	1.74	2.12	1.25
経常利益 (百万円)	Ordinary Income(¥Millions)	1,124	1,475	1,810	721	908	522
同売上比 (%)	Ordinary Income to Net Sales (%)	1.30	1.75	2.14	1.73	2.14	1.31
当期純利益 (百万円)	Net Income (¥Millions)	637	1,217	1,573	586	768	495
同売上比 (%)	Net Income to Net Sales (%)	0.74	1.44	1.86	1.40	1.81	1.26

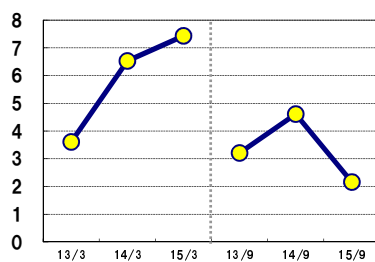
●純資産  
Net Assets

(百万円/¥Millions)



●自己資本当期純利益率  
Return on Equity

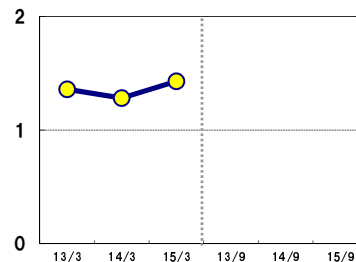
(%)



●純資産配当率

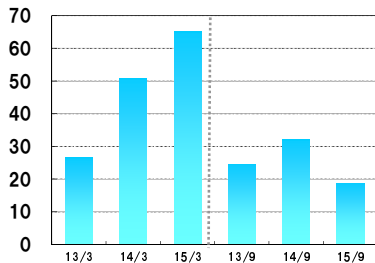
Dividends on Net Assets

(%)



●一株当たり当期純利益  
Net Income per Share

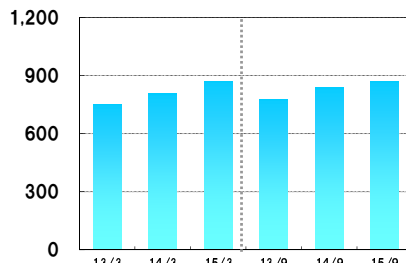
(円/¥)



●一株当たり純資産

Net Assets Worth per Share

(円/¥)



		2013/3	2014/3	2015/3	2013/9	2014/9	2015/9
<期末データ>	<b>AT Year End:</b>						
純資産 (百万円)	Net Assets (¥Millions)	17,976	19,327	22,999	18,579	20,060	23,007
<効率性>	<b>Profitability:</b>						
自己資本当期純利益率 (%)	Return on Equity (%)	3.61	6.53	7.43	3.21	4.61	2.16
純資産配当率 (%)	Dividends on Net Assets (%)	1.36	1.28	1.43	-	-	-
<1株当たり指標>	<b>Per Share:</b>						
一株当たり当期純利益 (円)	Net Income per Share(¥)	26.64	50.89	65.25	24.53	32.13	18.78
一株当たり純資産 (円)	Net Assets Worth per Share(¥)	751.65	808.14	870.75	776.87	838.80	871.06

注) 自己資本当期純利益率: 当期純利益/自己資本(期中平均)×100  
 純資産配当率: 年間配当金/純資産(期中平均)×100  
 一株当たり指標: 一株当たり当期純利益は期中加重平均株式数に基づき算出しています。

Notes: Return on Equity: Net Income/ Shareholders' Equity (Yearly Average) × 100  
 Dividends on Net Assets: Cash Dividends/ Net Assets (Yearly Average) × 100  
 Per Share: Net income per share is calculated on the weighted average number of shares outstanding.