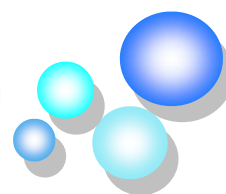


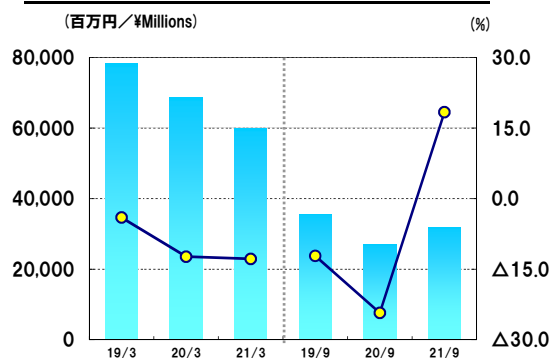
# Gloset Co., Ltd.

## FACT BOOK 2021/9

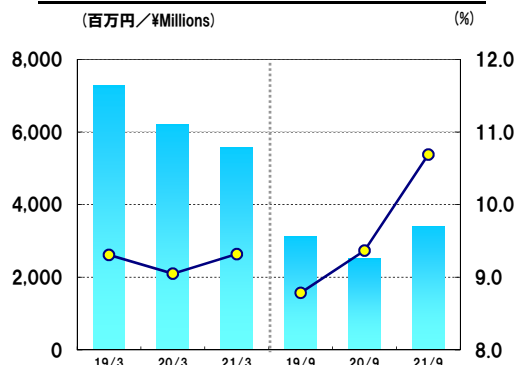


【連結：Consolidated】

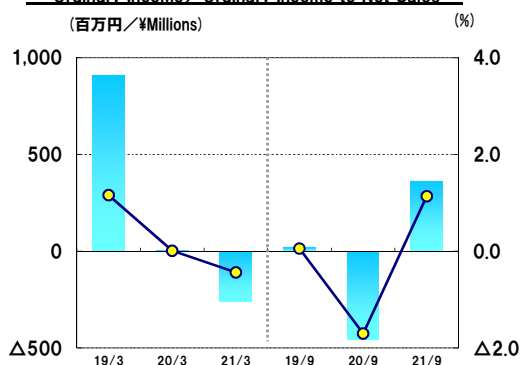
●売上高／増収率  
Net Sales / Increase



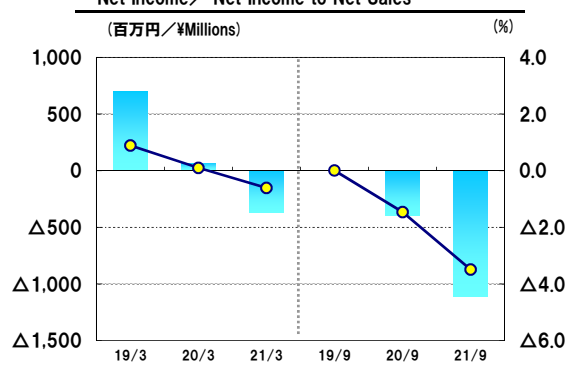
●売上総利益／同売上比  
Gross Profit / Gross Profit to Net Sales



●経常利益／同売上比  
Ordinary Income / Ordinary Income to Net Sales



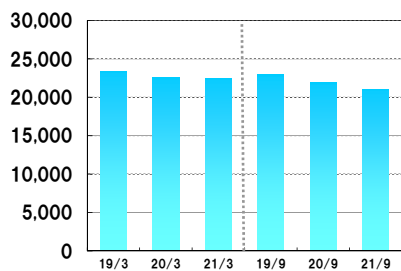
●当期純利益／同売上比  
Net Income / Net Income to Net Sales



		2019/3	2020/3	2021/3	2019/9	2020/9	2021/9
売上高 (百万円)	Net Sales(¥Millions)	78,332	68,664	59,861	35,541	26,907	31,848
売上総利益 (百万円)	Gross Profit (¥Millions)	7,290	6,214	5,580	3,122	2,520	3,404
同売上比 (%)	Gross Profit to Net Sales (%)	9.31	9.05	9.32	8.79	9.37	10.69
営業利益 (百万円)	Operating Income (¥Millions)	820	△61	△493	△39	△504	310
同売上比 (%)	Operating Income to Net Sales (%)	1.05	△0.09	△0.83	△0.11	△1.87	0.98
経常利益 (百万円)	Ordinary Income(¥Millions)	908	5	△261	19	△457	362
同売上比 (%)	Ordinary Income to Net Sales (%)	1.16	0.01	△0.44	0.05	△1.70	1.14
当期純利益 (百万円)	Net Income (¥Millions)	697	65	△367	1	△392	△1,111
同売上比 (%)	Net Income to Net Sales (%)	0.89	0.09	△0.61	0.00	△1.46	△3.49

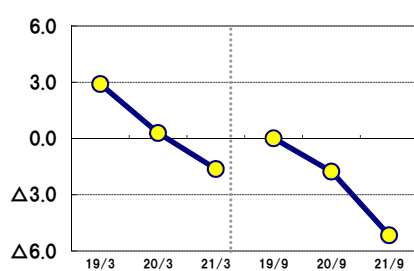
● 純資産  
Net Assets

(百万円/¥Millions)



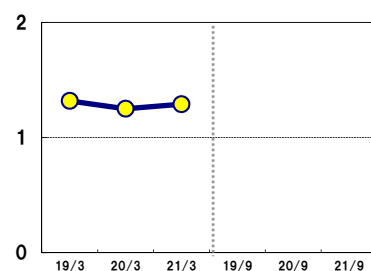
● 自己資本当期純利益率  
Return on Equity

(%)



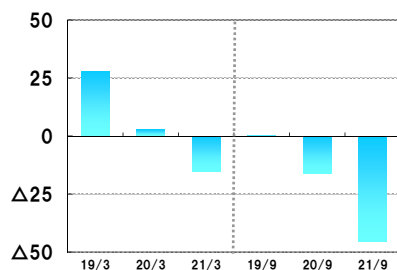
● 純資産配当率  
Dividends on Net Assets

(%)



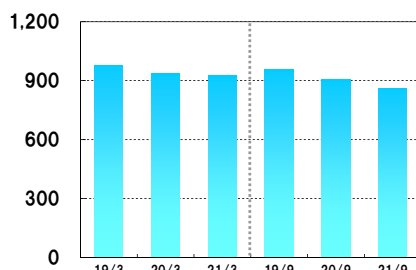
● 一株当たり当期純利益  
Net Income per Share

(円/¥)



● 一株当たり純資産  
Net Assets Worth per Share

(円/¥)



		2019/3	2020/3	2021/3	2019/9	2020/9	2021/9
< 期末データ >	<b>AT Year End:</b>						
純資産 (百万円)	Net Assets (¥Millions)	23,400	22,550	22,501	22,929	21,959	21,065
< 効率性 >	<b>Profitability:</b>						
自己資本当期純利益率 (%)	Return on Equity (%)	2.90	0.29	△1.63	0.01	△1.76	△5.10
純資産配当率 (%)	Dividends on Net Assets (%)	1.25	1.25	1.29	-	-	-
< 1株当たり指標 >	<b>Per Share:</b>						
一株当たり当期純利益 (円)	Net Income per Share(¥)	28.02	2.74	△15.17	0.07	△16.26	△45.59
一株当たり純資産 (円)	Net Assets Worth per Share(¥)	978.56	934.79	924.87	954.86	906.22	861.74

注) 自己資本当期純利益率: 当期純利益/自己資本(期中平均)×100  
 純資産配当率: 年間配当金/純資産(期中平均)×100  
 一株当たり指標: 一株当たり当期純利益は期中加重平均株式数に基づき算出しています。

Notes : Return on Equity: Net Income/ Shareholders' Equity (Yearly Average) × 100  
 Dividends on Net Assets: Cash Dividends/ Net Assets (Yearly Average) × 100  
 Per Share: Net income per share is calculated on the weighted average number of shares outstanding.